



*Installation Manual should be left with end-user.*

## **A Solid Commitment to Excellence**

In 1954, Nicholas DeSavino traveled from Italy and began a small woodworking business in Northeastern Pennsylvania. In his home workshop he crafted simple, affordable, and sturdy cabinets and furniture for working folks. As the DeSavino family grew, so did his reputation for honesty, craftsmanship, and reliability.

Learning along side their father, Pat, Dino and Mario grew up working in the business. Today, Nicholas' original commitment to integrity, workmanship, and superior customer service lives on in DeSavino & Sons.

Welcome to Open Air Outdoor Cabinetry by DeSavino & Sons. Open Air is one of the most design-friendly and flexible systems available. Open Air's unique and robust design allows for a wide variety of various room configurations to fit your needs. Because of the unique design, your system has been specially ordered based on your room layout and your end-user's needs.

The installation guide contained in this manual are general guidelines for installing the product. We recommend you read and carefully follow all of the instructions and safety information as detailed in this manual. Since each installation is unique and custom-ordered, some of the instructions may not apply to your installation.

This installation Manual contains important information about preparing a room for installation, the general installation of product, and important safety precautions necessary to ensure installer/user safety and prevent product damage. Since every Installation is uniquely configured to fit a specific room layout, you may encounter installation questions that are not detailed within this manual. If this is the case, please feel free to contact our technical support department at (888) 889-2314 for assistance.

Sincerely,

The DeSavino Family



## TABLE OF CONTENTS

GENERAL SAFETY INFORMATION.....	4
TOOLS AND MATERIALS .....	5
UNPACKING AND IDENTIFYING PRODUCT .....	6
INSTALLATION .....	7-21
• LEVELING FEET ATTACHMENT .....	7
• LEVELING THE CABINET .....	8
• ANCHORING TO WALLS.....	9
• FASTENING CABINETS TO EACH OTHER.....	10
• COUNTERTOP ATTACHMENT .....	10
• CUTTING INTO CABINETS .....	11
• FILLER ATTACHMENT .....	12
• BASE AND WALL CABINET FINISHED END PANEL .....	13
• FINISHED BACK PANEL .....	14-15
• TALL CABINETS .....	16
• REFRIGERATOR END PANELS.....	17
• TOE KICK .....	18
• GRILL CABINET APRON CUTOUT .....	19
• GRILL CABINET SUPPORT ASSEMBLY .....	20
• DOOR HINGE ADJUSTMENT .....	21
CARE AND MAINTENANCE .....	22
LIMITED LIFETIME WARRANTY.....	23

## GENERAL SAFETY INFORMATION

The Open Air Outdoor Cabinetry product is safe and convenient when assembled and used properly. However, as with any product, certain safeguards must be observed—both during installation and during use. **It is your responsibility to install your cabinetry correctly.** The following symbols will be used throughout this manual to identify safety hazards and the risk level associated with the hazard statement. When a symbol heads a group of statements, that symbol should be considered for all of the statements that follow within that grouping.

### **DANGER**

Indicates an imminently hazardous situation which, if not avoided, will result in death or serious injury.

### **WARNING**

Indicates a potentially hazardous situation which, if not avoided, could result in death or serious injury.

### **CAUTION**

Indicates a potentially hazardous situation which, if not avoided, may result in minor or moderate injury.

### **DANGER**

- Observe location of and follow all local codes for HVAC, plumbing, gas, oxygen, electrical or phone wiring and/or boxes.

### **WARNING**

- Failure to follow any of the safeguards listed in this manual could result in serious injury or property damage. Read all of the information in this manual before installing product.
- Mounting hardware is not supplied, due to the various types of wall construction on which the product may be mounted. It is the installers responsibility to ensure that the mounting hardware will support the weight of the product and its contents (in lbs.).
- Take all safety precautions when using tools to install product. Serious injury or death could result. Please refer to the manufacturer's instructions for important safety information when using tools.
- Use proper lifting techniques when handling product. Serious injury could result. Do not use product top to lift or carry product. Always carry product from bottom. For heavier product pieces, please use the appropriate number of people or equipment to lift and place product.
- DO NOT use any hardware or accessories not recommended by the hardware manufacturer for this application. Serious injury or product damage could result.
- DO NOT exceed maximum weight capacity for product. Doing so could cause personal injury or property damage.
- DO NOT stand or sit on product or countertops. Serious injury could result. Use product only as recommended by the manufacturer.
- DO NOT remove back or side panel from base units. This is a required structural support for the unit.
- DO NOT exceed an unsupported countertop span of greater than 10" for granite and 15" for quartz.
- Installers should always wear the

appropriate safety equipment (shoes, glasses, gloves, etc.) when installing product.

- Installers should always wear Protective eyewear and Gloves when cutting and installing the cabinet.

### **CAUTION**

- Use care when opening and removing product from shipping cartons. Using a razor, utility knife, or other sharp object could result in injury and/or product damage.
- DO NOT place tools or other installation items onto product during installation. Product damage could result.
- DO NOT move stationary product by pushing across floor. Floor or product damage could occur. Use appropriate furniture or heavy item moving equipment (not supplied) to transport product.

## TOOLS AND MATERIALS

The following list details tools and materials needed for a standard installation. Depending on your installation, additional tools or materials may be required. Please prepare all tools and materials before attempting installation. Although the tools are listed in general categories, some tools or materials may be needed for more than one installation step.

### Hardware Items Supplied:

<i>Description</i>	<i>Size</i>	<i>Quantity</i>	<i>Where Used</i>
Joining Hardware	#8 x 1-1/4" to 1 1/2"	3/joint or 4-6/tall cabinet	Fastening cabinets to each other
Sheet Metal Screws	#8 x 1-1/4"	Quantity Varies	Tall Cabinets, Filler, Trim Molding and some Finished End Panels
Sheet Metal Screws	#8 x 1-3/4"	4-8/Back Panel	Finished Back Panel
1/2" Spacer	3" x 6" x 1/2"	4/Cabinet	Finished End Panels
Machine Screws	#10 x 1-1/8"	6/Side Panel	Finished End Panels
Full Threaded Stud	3/8-16 X 12" - 18"	4/Grill Support Assembly	Grill Cabinet Support Assembly
16 Hex nut and washer	3/8"-16 Hex nut and washer	4/Grill Support Assembly	Grill Cabinet Support Assembly
Threaded Rod offset ceiling mount	-	4/Grill Support Assembly	Grill Cabinet Support Assembly
Aluminum Rectangular tube.	1" x 1.5" x (Length Varies)	2/Grill Support Assembly	Grill Cabinet Support Assembly
Sheet Metal Screws	#8 x 1"	Quantity Varies	Grill Cabinet Support Assembly, Finished Back Panel
Leveling Feet	4"-6" High	4/Cabinet	Leveling Feet Attachment
Sheet Metal Screws	#8 x 5/8"	16/Bag— 2/Mounting Plate	Leveling Feet Attachment and Toe Kick

### Hardware Items Not Supplied:

#### Mark Walls

- Measuring Tape
- 2-3 foot level
- Chalk/chalk line
- Pencil(s)
- Stud Finder

#### Base Cabinet and Wall Cabinet Install

- Drill (cordless and/or electric) with drill and driver bits (1/8", 3/16" and 1/4" metal, wood and masonry, if necessary)
- Screwdriver set (Phillips, slotted)
- 4 mm Hex Bit with 1/4" Hex Shank for Power Tools (If cabinet needs to be unassembled).
- Safety Glasses
- Stainless Steel Wall mounting hardware (i.e., screws, anchors, molliers, etc.)
- Jigsaw or Router with a blade or bit suitable for general use with wood or plastic

- Clamps with rubber pads
- Saw (circular saw or table saw)
- Miter Saw
- Jig Saw
- Spade bit
- Carpenters Square
- Dry erase markers (to mark anything on the material)
- Silicon adhesive
- Rubber Mallet
- Masking Tape

## UNPACKING AND IDENTIFYING PRODUCT

- **Check that all product has been ordered and the shipment received.**

If possible, we recommend you confirm product shipment against the original purchase order. Double check that all product ordered has been received. All shipping cartons are clearly marked with the following information:

- Account Name
- Job Name
- Job Number
- PO Number (If used)
- Item Number/Description

- **Review site layout plan.**

If your installation has minimal product (1-3 pieces) a site layout plan is not required. For large installations with more than 3 pieces, a site layout plan is **required** before attempting installation. A site layout plan should have been completed before or during the preliminary design stages/ordering. If you do not have a site layout plan for each large installation, please contact the appropriate personnel to retrieve the site layout plan(s).

### **Observe location of HVAC, plumbing, gas, electrical or phone wiring and/or boxes.**

Check that wiring, plumbing, gas, oxygen, electrical or phone boxes are accounted for in site layout plan. If necessary, contact qualified personnel to re-route wires and/or re-locate items prior to installation.


- **Confirm field measurements.**


Observe room layout for obstructions or changes in room layout. Confirm all field measurements and verify against site layout plan.

- **Stage product for installation(s).**

If not already done, organize product by install location. Arrange to have each product grouping delivered to the install location(s).

- **Unpack product.**

 **WARNING** Use proper lifting techniques when handling product. Serious injury could result. DO NOT use product top to lift or carry product. Always carry product from bottom. For heavier product pieces, please use the appropriate number of people or equipment to lift and place product.

 **CAUTION** Use care when opening and re-moving product from shipping cartons. Using a razor, utility knife, or other sharp object could result in product damage.

Carefully remove product from shipping cartons. Place product on a flat surface and remove protective coverings. **Carefully inspect all packing materials for hardware and product accessories.** Inspect all product for shipping damage. If any damage is noticed, contact your receiving department or carrier immediately. Once all product has been thoroughly unpacked and inspected, dispose of all shipping materials.


NOTE: You may need to save packaging materials when making a claim against a shipping carrier.

- **Arrange product.**

Following site layout plan, arrange product in general vicinity of installation. Note height and color in assisting with product recognition.

- **Determine wall types and hardware needs.**

Determine wall types. Depending on the wall types, hardware needs may vary. Determine and collect necessary hardware for installation.

 **WARNING** Mounting hardware is not supplied, due to the various types of wall construction on which the product may be mounted. It is the installers responsibility to ensure that the mounting hardware will support the weight of the product and its contents (in lbs.).

## LEVELING FEET ATTACHMENT

Each Base Cabinet will include (4) adjustable leveling feet and (16) #8 x 5/8 flat head stainless steel mounting screws. Each leveling foot consists of a Top, Adjustable Tube and Base.

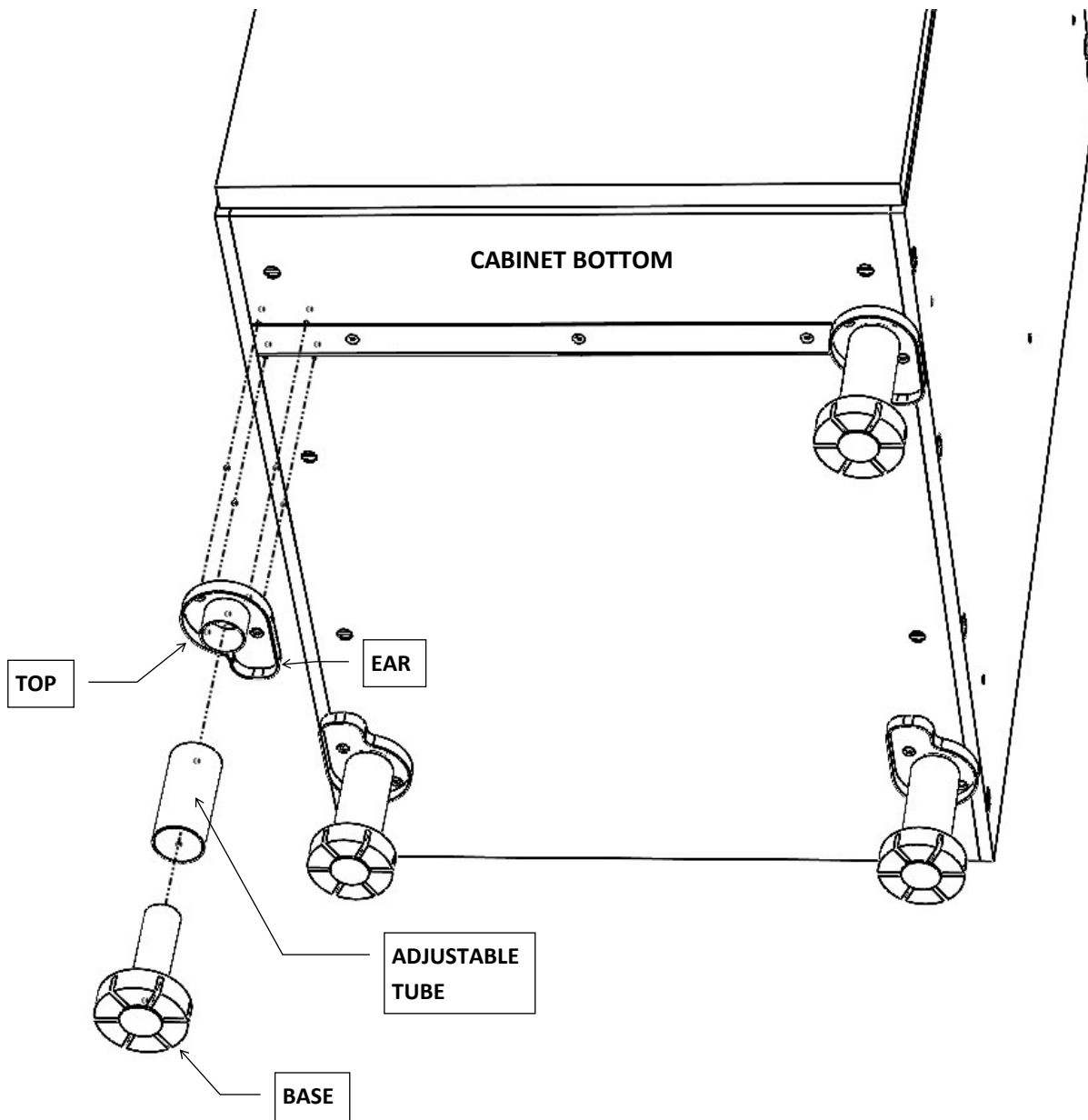
- The Top should be mounted into the pre-drilled holes of the base of the cabinet with the supplied screws.
- The “elbow” of the Top remains inside the perimeter of the base cabinet.
- The Adjustable Tube and Base are then inserted into each Top.

\*\* Make sure the “Top” of the leveling foot is rotated so that the “Ear” is positioned inside and towards the center of the perimeter of the cabinet.



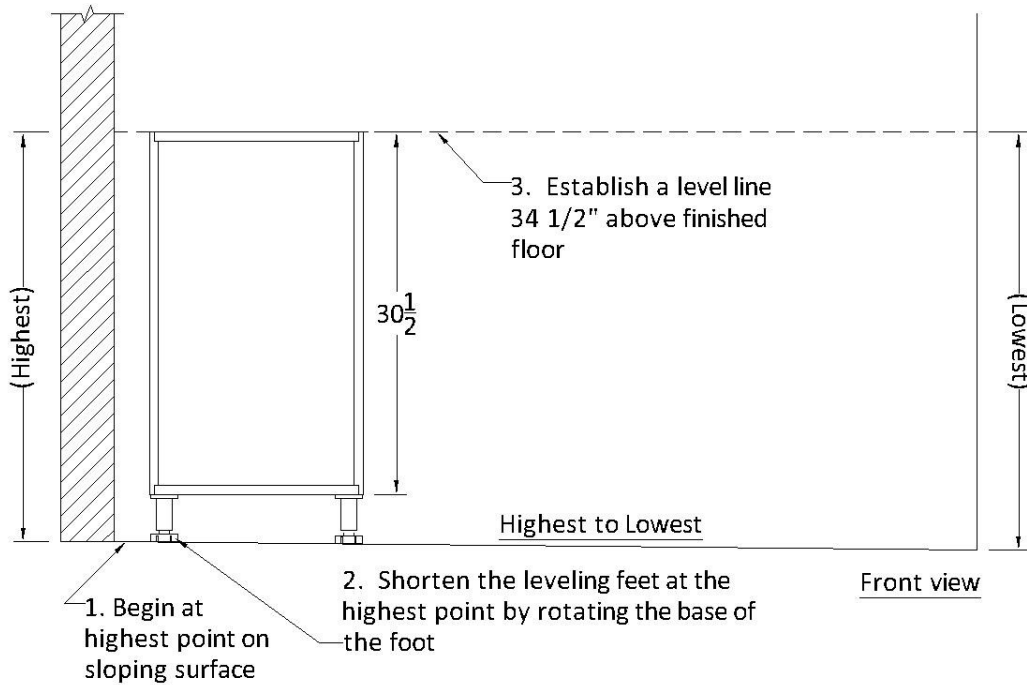
### WARNING

Use proper lifting techniques when handling product. Serious injury could result. Do not use product top to lift or carry product. Always carry product from bottom. For heavier product pieces, please use the appropriate number of people or equipment to lift and place product.



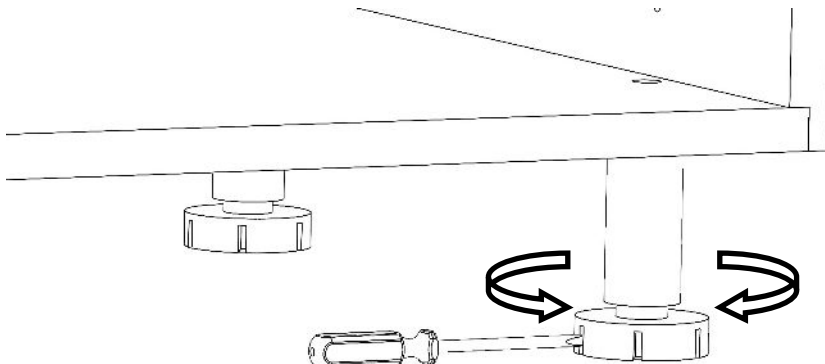
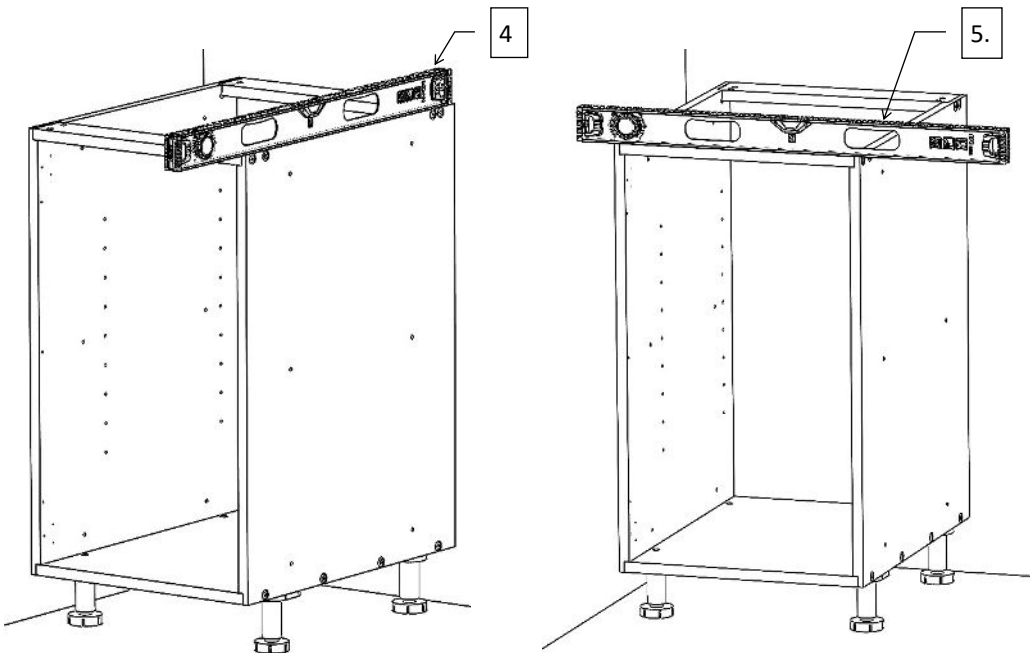


## LEVELING THE CABINET



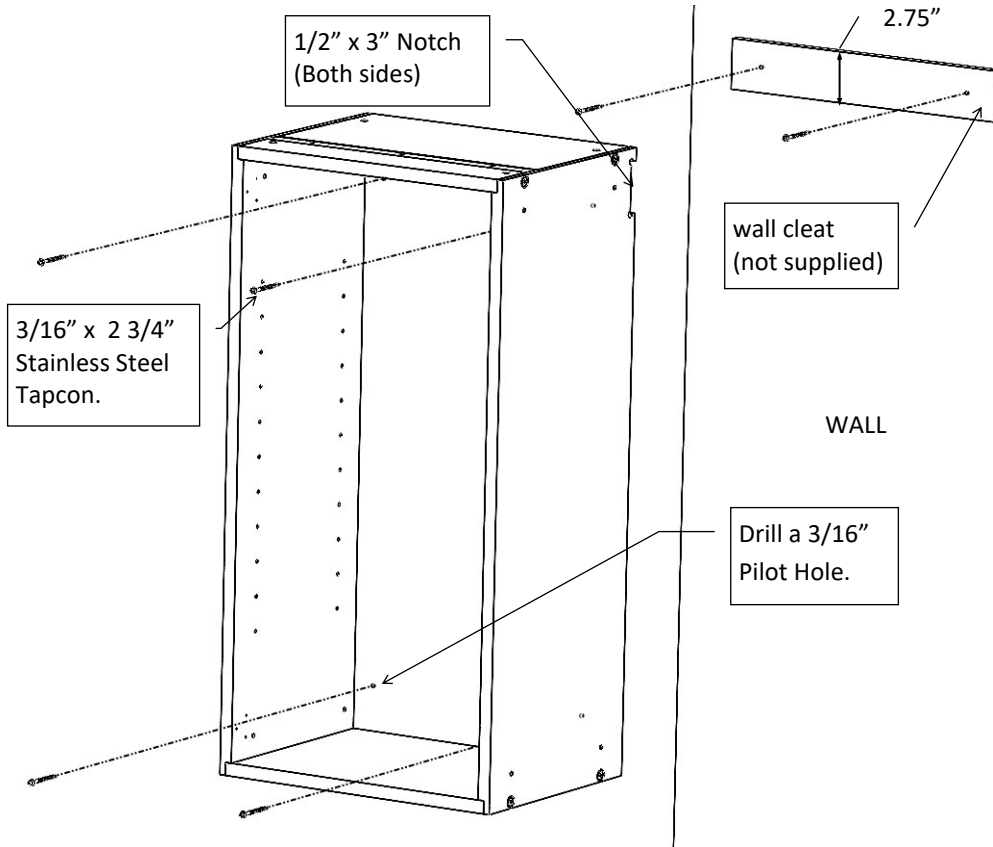
1. Begin at highest point on sloping surface.
2. Shorten the leveling feet at the highest point by rotating the Base of the foot.
3. Establish a level line 34 1/2" above the finished floor.
4. Level cabinet front to back.
5. Level cabinet left to right.

**WARNING** Use proper lifting techniques when handling product. Serious injury could result. Do not use product top to lift or carry product. Always carry product from bottom. For heavier product pieces, please use the appropriate number of people or equipment to lift and place product.





## ANCHORING TO WALLS



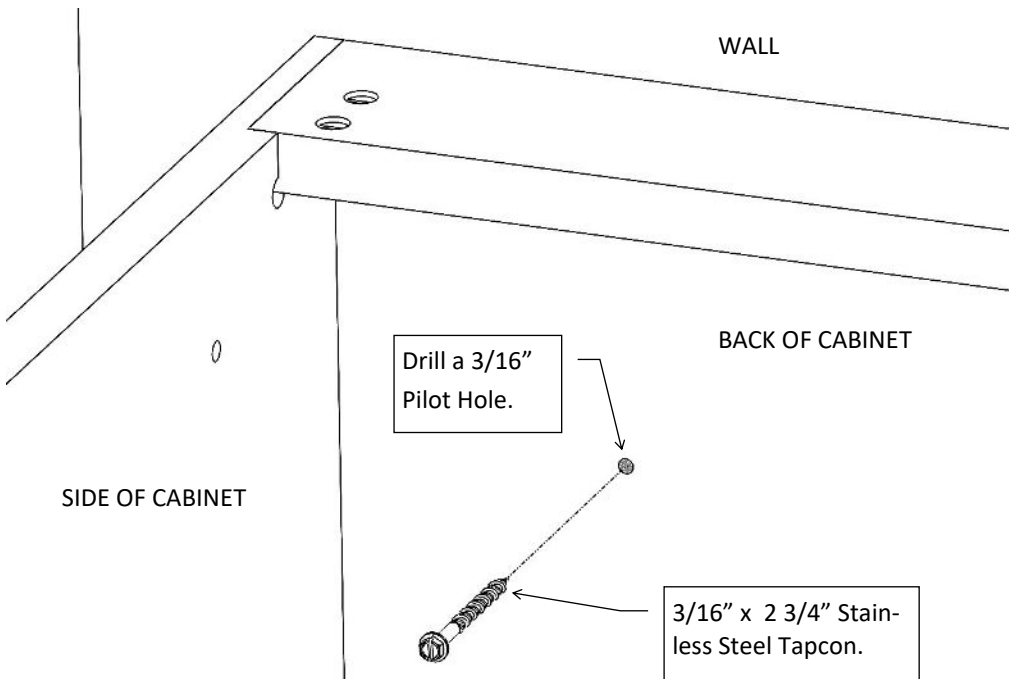
### ANCHORING WALL CABINETS TO WALLS

- If you are referring to a detailed site plan, we recommend you install all overhead units before installing base units. However, in some cases, installing base units before overheads will allow for more precise alignment.
- For concrete block or stucco walls, stainless steel Tapcons are recommended. (4) fasteners per cabinet are recommended for wall cabinets.

**Tip:** There is a 1/2" x 3" notch in the back of the wall cabinet to allow it to rest on top of a wall cleat (not supplied). The wall cleat should be 1/2" thick and cut to 2.75" high. The length is to be the width of the wall cabinet or to be the total width of the run of wall cabinets combined. Attach wall cleat to wall, then align notch of cabinet over wall bracket. Fasten wall cabinets to wall with appropriate hardware (not provided).

**CAUTION** Mounting hardware is not supplied, due to the various types of wall construction on which the product may be mounted. It is the installers responsibility to ensure that the mounting hardware will support the weight of the product and its contents (in lbs.).

**CAUTION** Use proper lifting techniques when handling product. Serious injury could result. Do not use product top to lift or carry product. Always carry product from bottom. For heavier product pieces, please use the appropriate number of people or equipment to lift and place product.

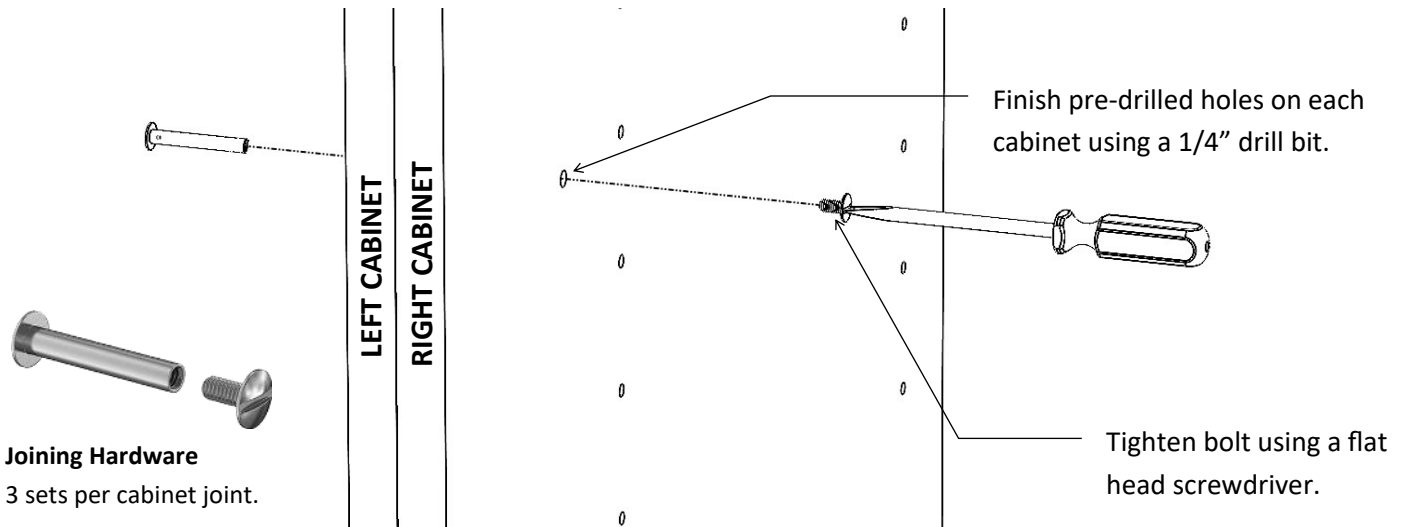


### ANCHORING BASE CABINETS TO WALLS

- Verify that product is square and level before attaching base unit to wall and attaching countertop.
- Fasten cabinets together using common hardware (not provided) that are specific to your wall type.
- Fasten with 3/16" x 2 3/4" Stainless Steel Tapcon if wall is concrete or block.
- (2) fasteners per cabinet are recommended for base cabinets.

## FASTENING CABINETS TO EACH OTHER

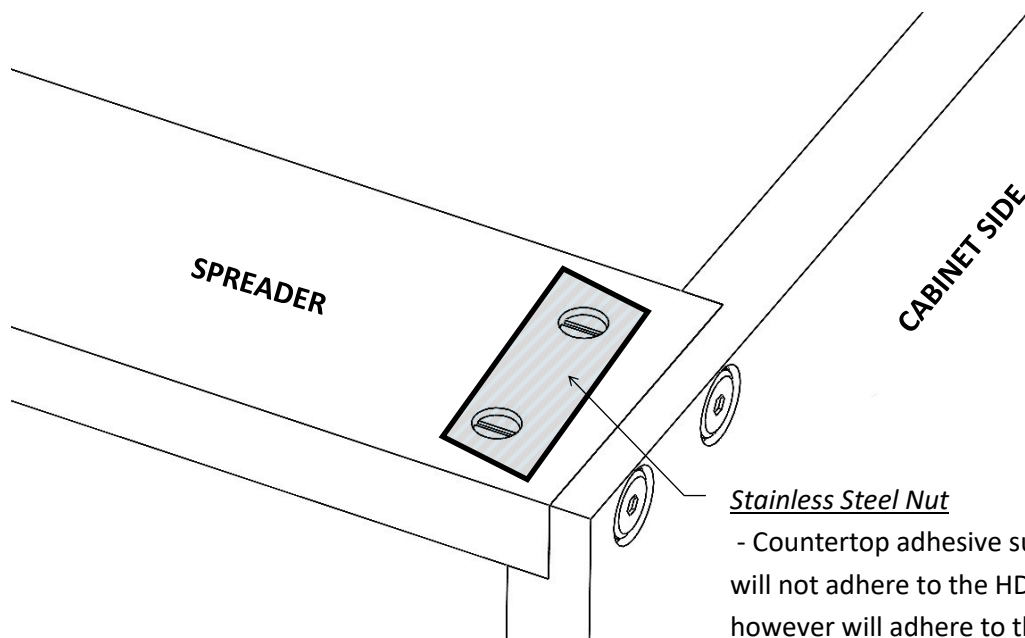
- All cabinets have pre-drilled holes that are aligned for a precise fit. Finish drilling the holes of two adjoining cabinets using a 1/4" drill bit and then fasten the cabinets together using the provided joining hardware. There are 6 pre-drilled holes in the sides of each cabinet, however we only supply 3 sets of joining hardware per cabinet joint. Install 2 sets of hardware in the front and 1 set in the back.
- Use clamps to hold cabinets together when drilling and attaching. For some parts, pre-drilled holes will be omitted. It will be necessary to drill holes on-site.



## COUNTERTOP ATTACHMENT

**⚠ WARNING** DO NOT stand or sit on product or countertops. Serious injury could result. Use product only as recommended by the manufacturer.

**⚠ WARNING** DO NOT exceed an unsupported countertop span of greater than 10" for granite and 15" for quartz.



### Stainless Steel Nut

- Countertop adhesive such as Silicon will not adhere to the HDPE spreader, however will adhere to the stainless steel nut located on each front and rear spreader.

- Professional countertop fabrication is recommended for granite, quartz, porcelain, concrete or solid surface countertops.

## CUTTING INTO CABINETS

- Cutouts can be made into base or wall cabinets in the sides, back or bottom .
- Use a Jig Saw or Paddle Bit to cut an access hole (Plumbing, phone jacks, electrical outlets, etc.) in the panel of the unit. Do not remove any panels. Panels are a necessary structural support for the base unit.
- Cutouts are to be avoided in locations that interfere with the cabinets drawer slides, door hinges, shelf clip holes, hardware, or aluminum extrusions.



### WARNING

Take all safety precautions when using tools to install product. Serious injury or death could result. Please refer to the manufacturer's instructions for important safety information when using tools.



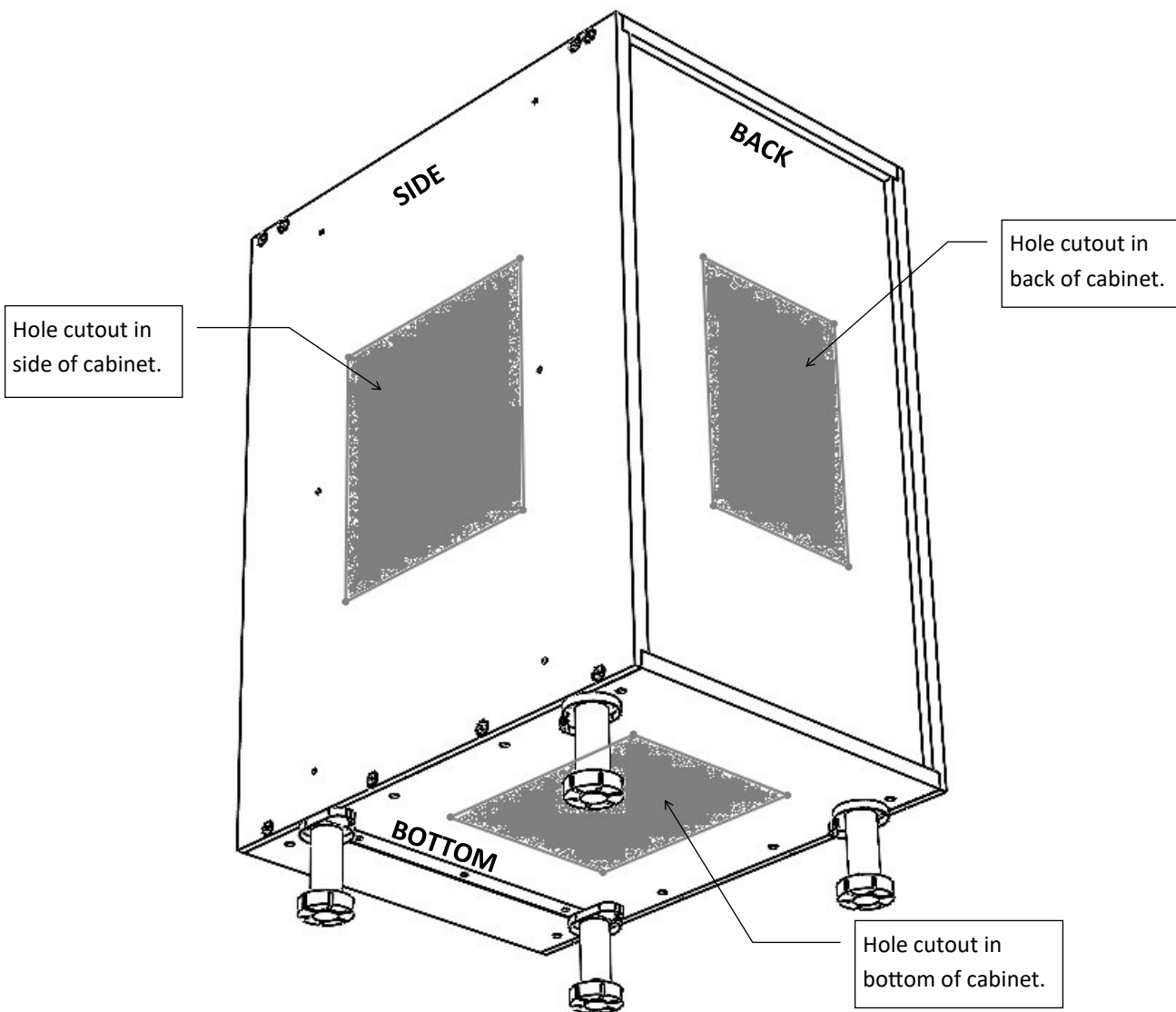
### WARNING

DO NOT remove back or side panel from base units. This is a required structural support for the unit.

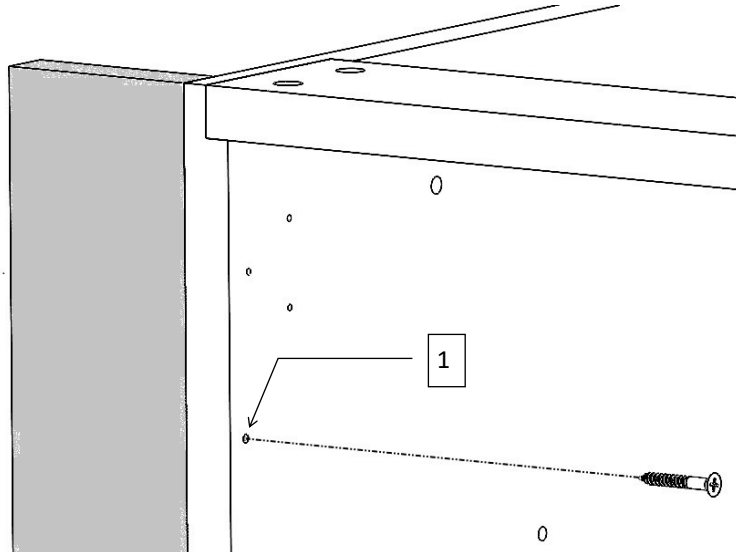
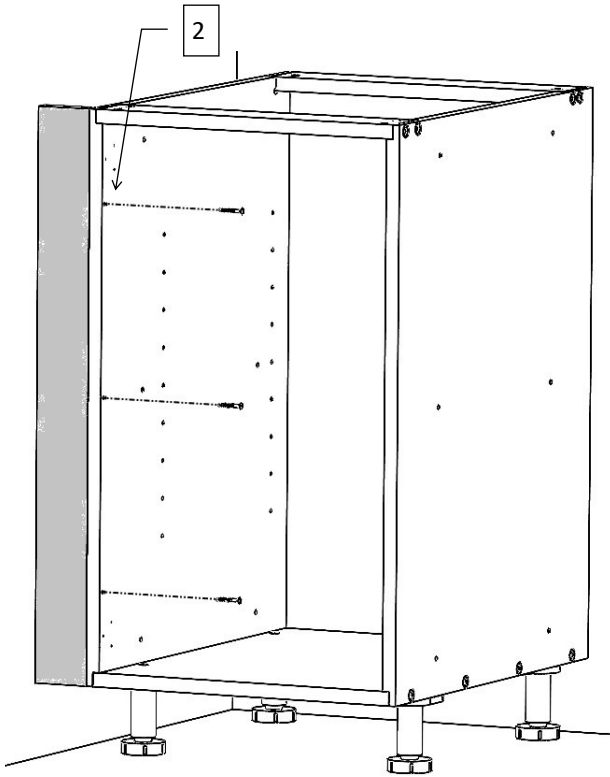


### WARNING

Installers should always wear Protective eyewear and Gloves when cutting and installing the cabinet.

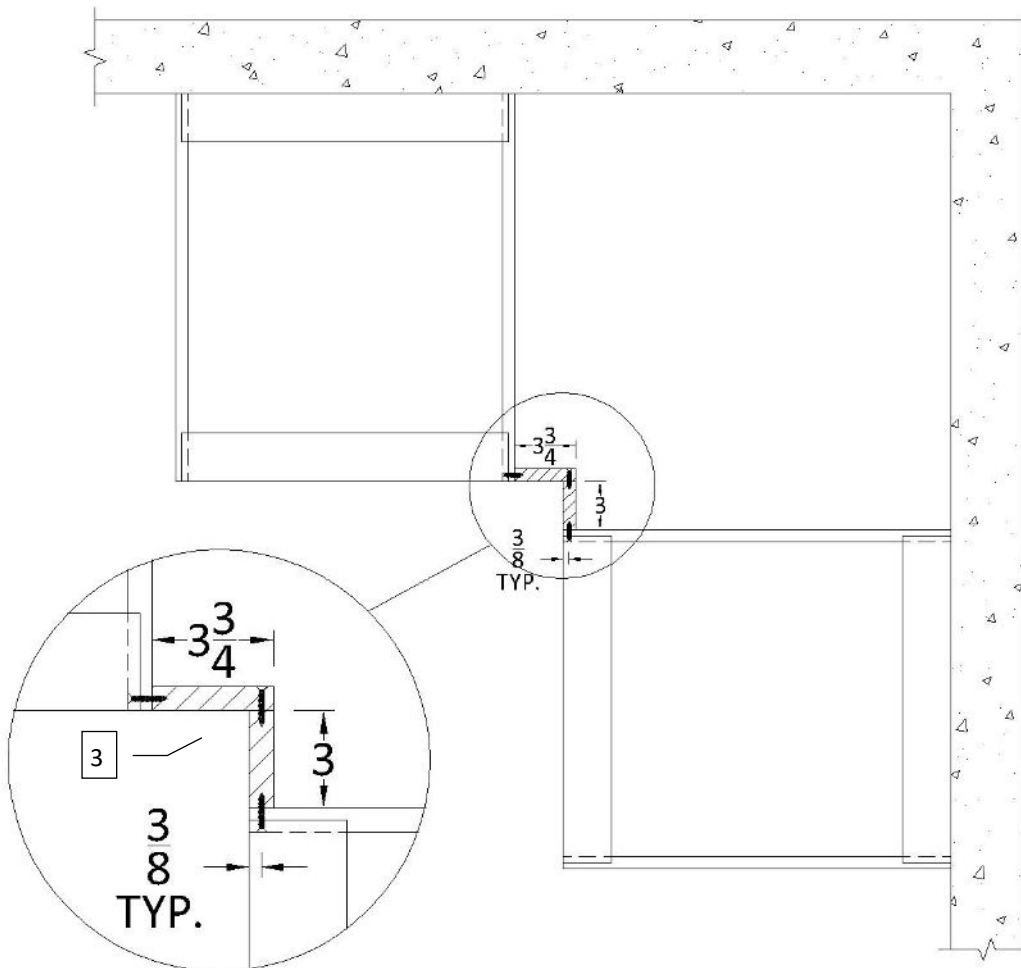


## FILLER ATTACHMENT



### WARNING

Installers should always wear Protective eye-wear and Gloves when cutting and installing the cabinet.



Filler Kits are optional accessories to the Open Air line. Refer to the site plan for proper location of fillers.

The Filler Kits are designed to aesthetically fill the gap between the base unit and the backwall or between corners (90° angle).


Fillers can be cut using a table saw or circular saw as needed.

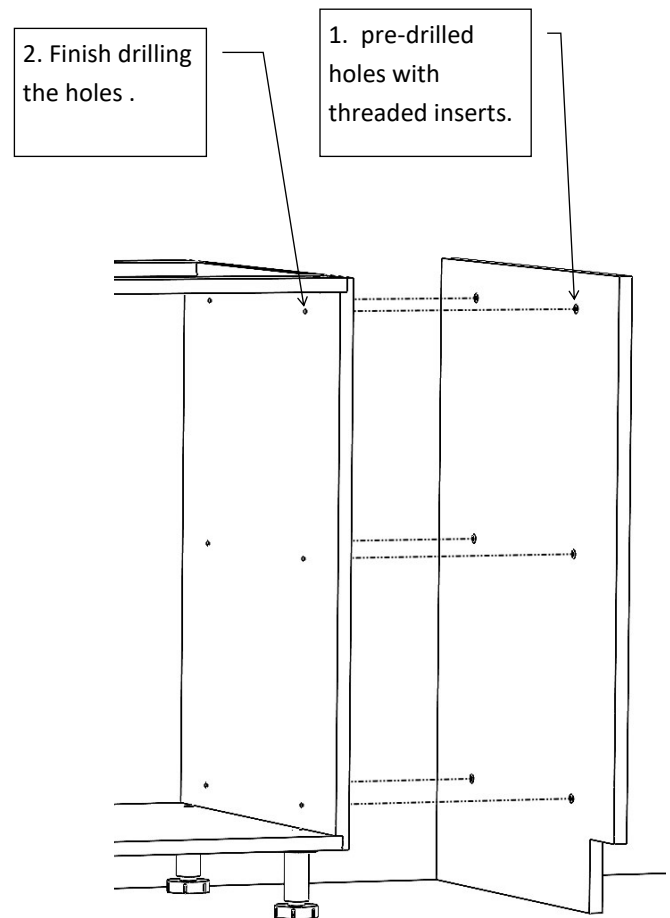
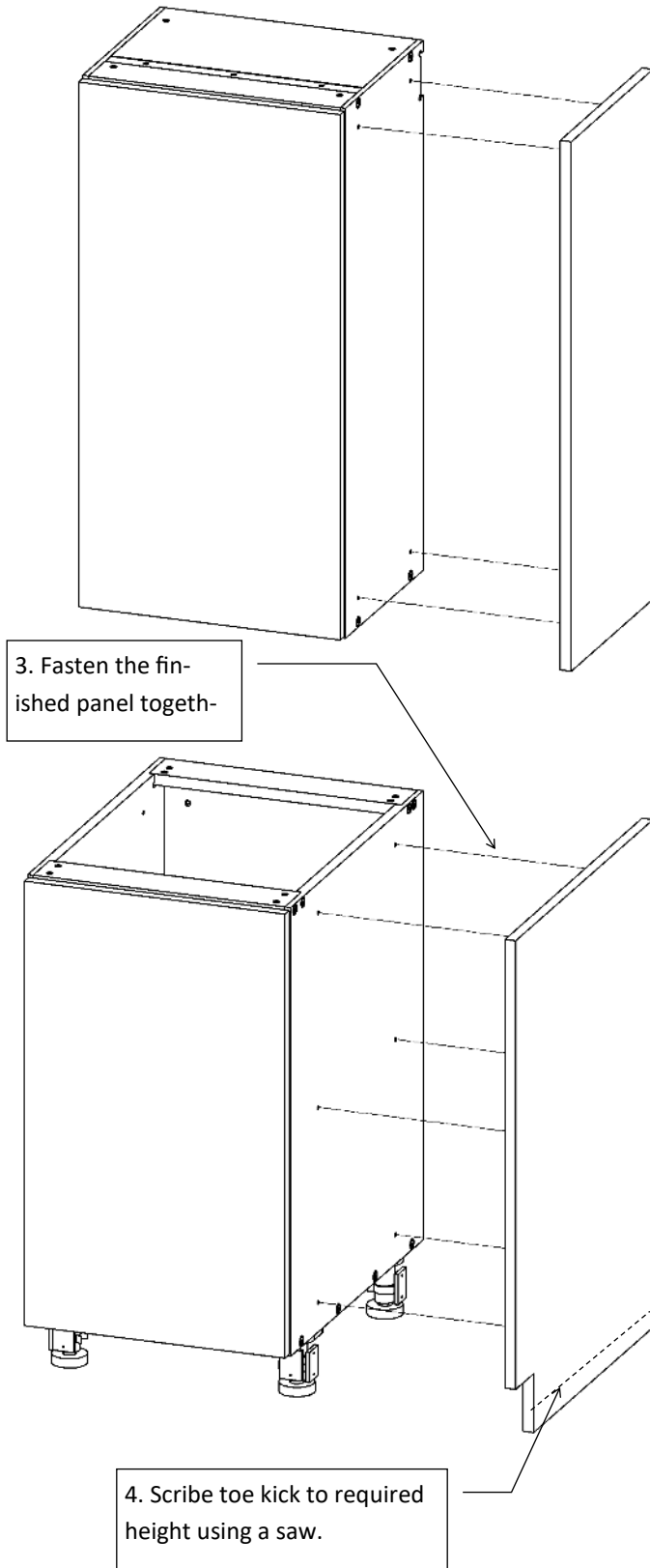
1. Pre-drill clearance hole into the inside wall of the cabinet 3/8" from the edge using a 3/16" drill bit. Drill a 1/8" pilot hole into the filler.
2. Use the supplied #8 x 1.25" Flat Head screws to attach the filler to the side wall of the cabinet. Filler is to be positioned flush with the face of the cabinet.
3. Corner fillers are secured together from the back edge.

## BASE AND WALL CABINET FINISHED END PANEL

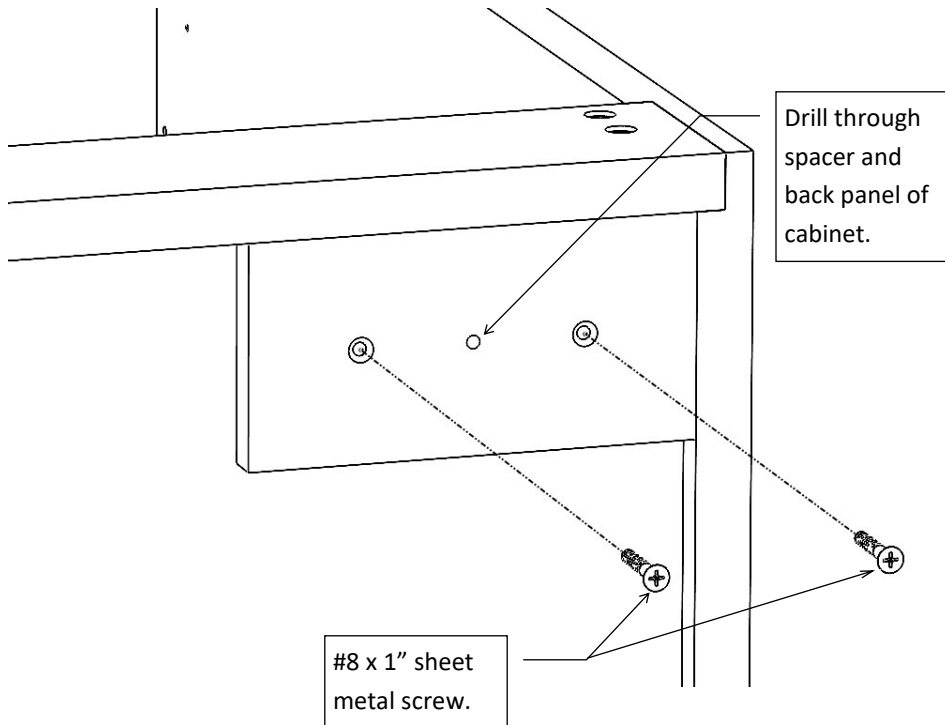
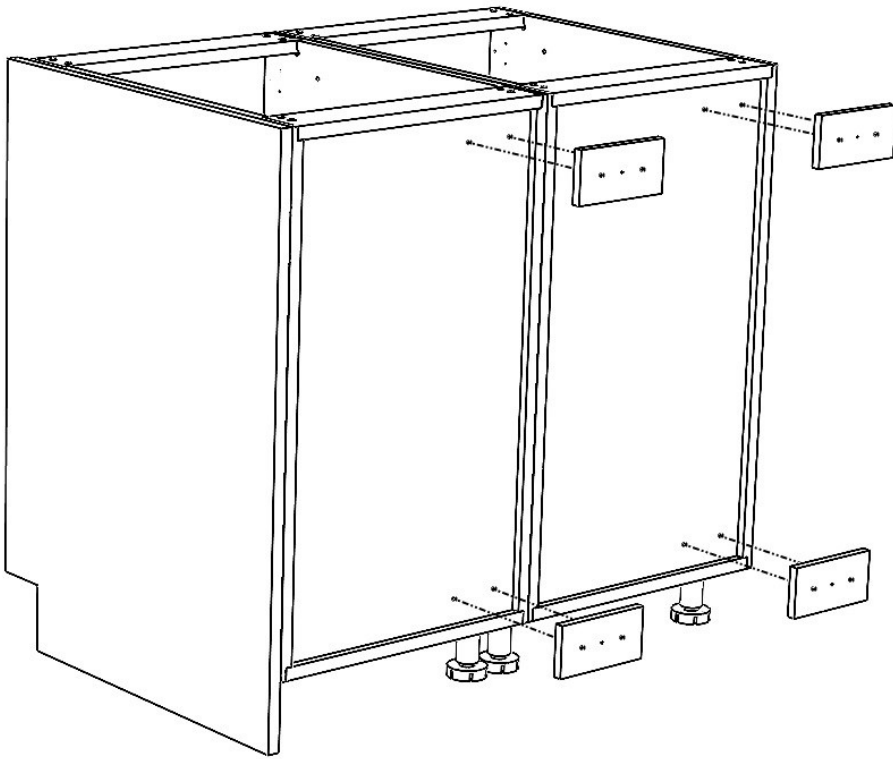
Base and Wall Cabinet finished panels are used whenever there is an exposed end of a cabinet run. Finished panels are used to hide exposed cabinet hardware and also add to the aesthetics of the finished product.

1. Each finished panel will have (6) pre-drilled holes with threaded inserts.
2. Finish drilling the holes of the side wall of the cabinets using a 1/4" drill bitt. The holes in the cabinet side and the finished panel will align together.
3. Fasten the finished panel together using the supplied 10-24 x 1-1/8 flat head machine screws.
4. Scribe toe kick to required height using a saw.

 **WARNING** Installers should always wear Protective eyewear and Gloves when cutting and installing the cabinet.



## FINISHED BACK PANEL

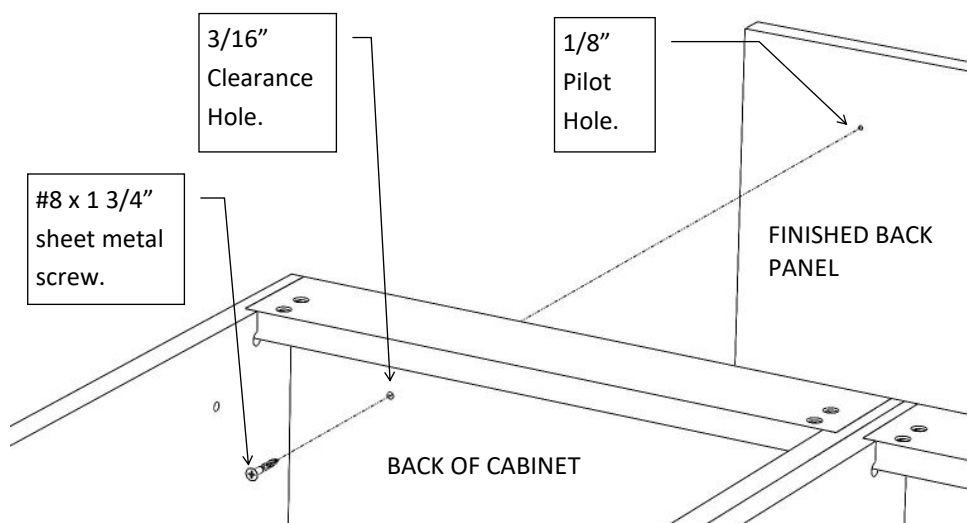


- Finished Back Panels are used whenever there is an exposed back of an island or peninsula style cabinet run. Finished Back Panels are used to hide the exposed rear of the cabinet and also add to the aesthetics of the finished product.
- Review your site plan to determine the location and size of each finished back panel.
- Attach a supplied 3" high x 6" wide x 1/2" thick spacer to the back side of the cabinet by pre drilling with a 1/8" bit through the spacer and 1/2" into the back of cabinet being careful not to drill all the way through the back of the cabinet.
- If the back panel has a square raised panel or v-groove design, place spacers where screws will not poke through the design.
- Fasten the spacer by using (2) #8 x 1" supplied stainless steel sheet metal screws per spacer.
- Use clamps to hold the spacer in place while drilling into back of cabinet.
- Drill a third 3/16" diameter hole through spacer and back of cabinet
- Use (2) spacers per 18" of cabinet width.

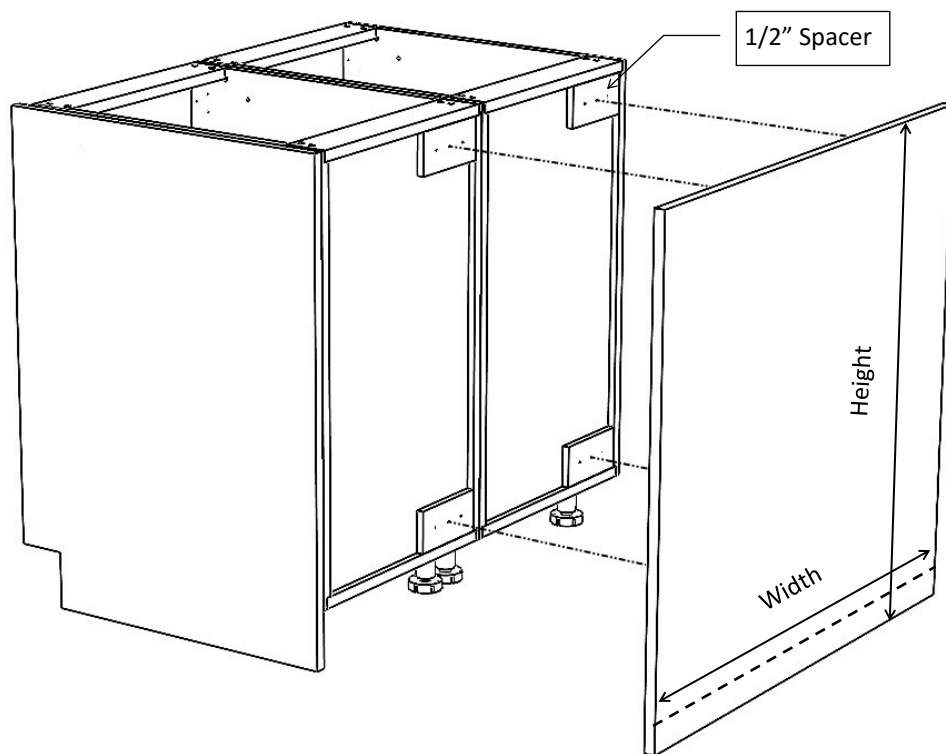
**⚠ WARNING** Installers should always wear Protective eyewear and Gloves when cutting and installing the cabinet.

**⚠ WARNING** Take all safety precautions when using tools to install product. Serious injury or death could result. Please refer to the manufacturer's instructions for important safety information when using tools

## FINISHED BACK PANEL



- Back panels are typically ordered oversized and are to be cut to fit during installation.
- Scribe panel to required height using a saw.
- Use rubber clamps to hold the panel in place, protecting the finished surface of the panel.
- From the inside of the cabinet, through the clearance holes, pre-drill a partial 1/8" hole into the back panel. Do not drill all the way through the panel. Holes should go 1/2" into the 3/4" back panel.
- Use a Drill Stop for pre-drilling holes in panels.
- Using the supplied 1 3/4" sheet metal screws, secure the finished panel from the inside of the cabinet through the holes you drilled.



**⚠ WARNING** Installers should always wear Protective eyewear and Gloves when cutting and installing the cabinet.

**⚠ WARNING** Take all safety precautions when using tools to install product. Serious injury or death could result. Please refer to the manufacturer's instructions for important safety information when using tools



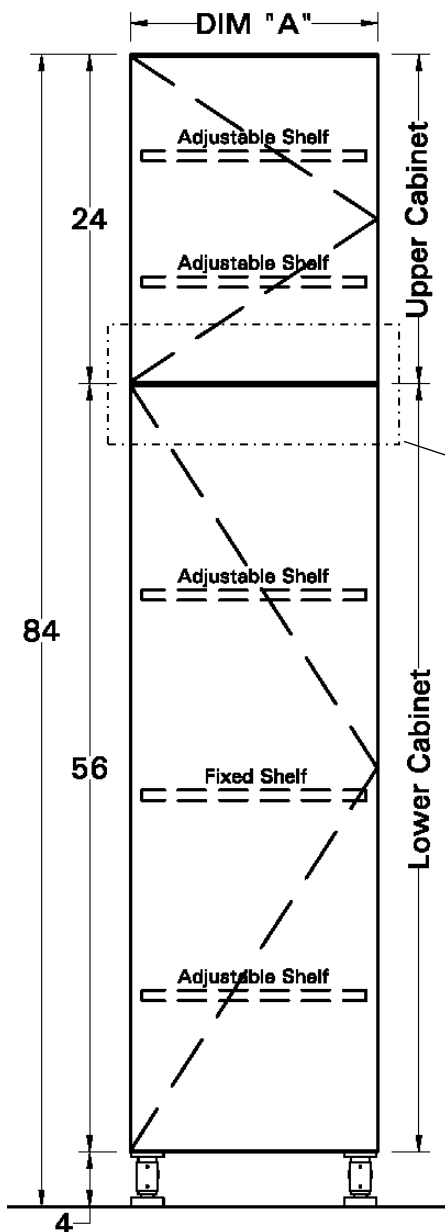
## TALL CABINETS

**CAUTION** Mounting hardware is not supplied, due to the various types of wall construction on which the product may be mounted. It is the installers responsibility to ensure that the mounting hardware will support the weight of the product and its contents (in lbs.).

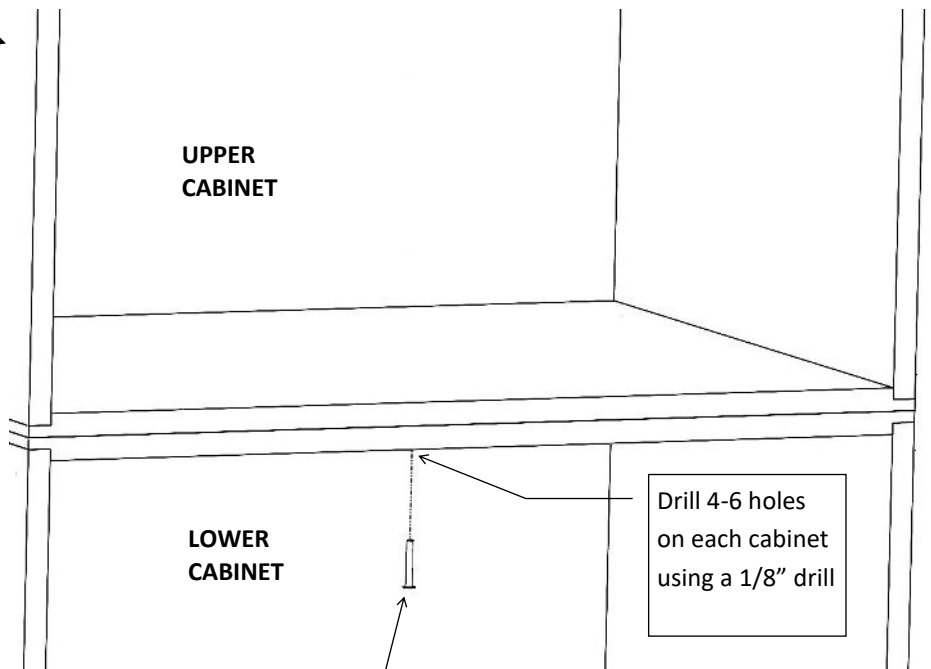
**WARNING** Take all safety precautions when using tools to install product. Serious injury or death could result. Please refer to the manufacturer's instructions for important safety information when using tools.

**WARNING** Use proper lifting techniques when handling product. Serious injury could result. Do not use product top to lift or carry product. Always carry product from bottom. For heavier product pieces, please use the appropriate number of people or equipment to lift and place product.

1. Tall Cabinets are made and shipped in (2) sections (Upper and Lower Cabinet) and are to be assembled together on-site.
2. Fasten the cabinets together using the supplied #8 x 1.25" Stainless Steel Sheet Metal Screws by drilling 4-6 Pilot holes from the underside of the lower cabinet to the underside of the upper cabinet by using a 1/8" drill bit.
3. Holes should go 1/2" into the 3/4" floor. Care should be taken to not drill all the way through the floor.
4. Use a Drill Stop for pre-drilling holes into the panels.
5. Use clamps to hold cabinets together when drilling



**ELEVATION VIEW**



Supplied #8 x 1.25"  
Stainless Steel  
Sheet Metal Screws.

## REFRIGERATOR END PANELS

Refrigerator end panels are designed sit next to an under-counter appliance (bar refrigerator, ice maker, etc).

1. Attach Refrigerator End Panel to wall. Shim bottom of panel when leveling.



### WARNING

Mounting hardware is not supplied, due to the various types of wall construction on which the product may be mounted. It is the installers responsibility to ensure that the mounting hardware will support the weight of the product and its contents (in lbs.).

2. **Optional Trim Molding** can be used when there is a large gap between the floor and bottom of panel as the result of a pitched floor. Trim molding is oversized and is to be cut to fit. Includes (1), 6" x 36" x 0.75" thick Trim Molding. Use supplied #8 x 1-1/4" sheet metal screws to attach molding to bottom of panel.

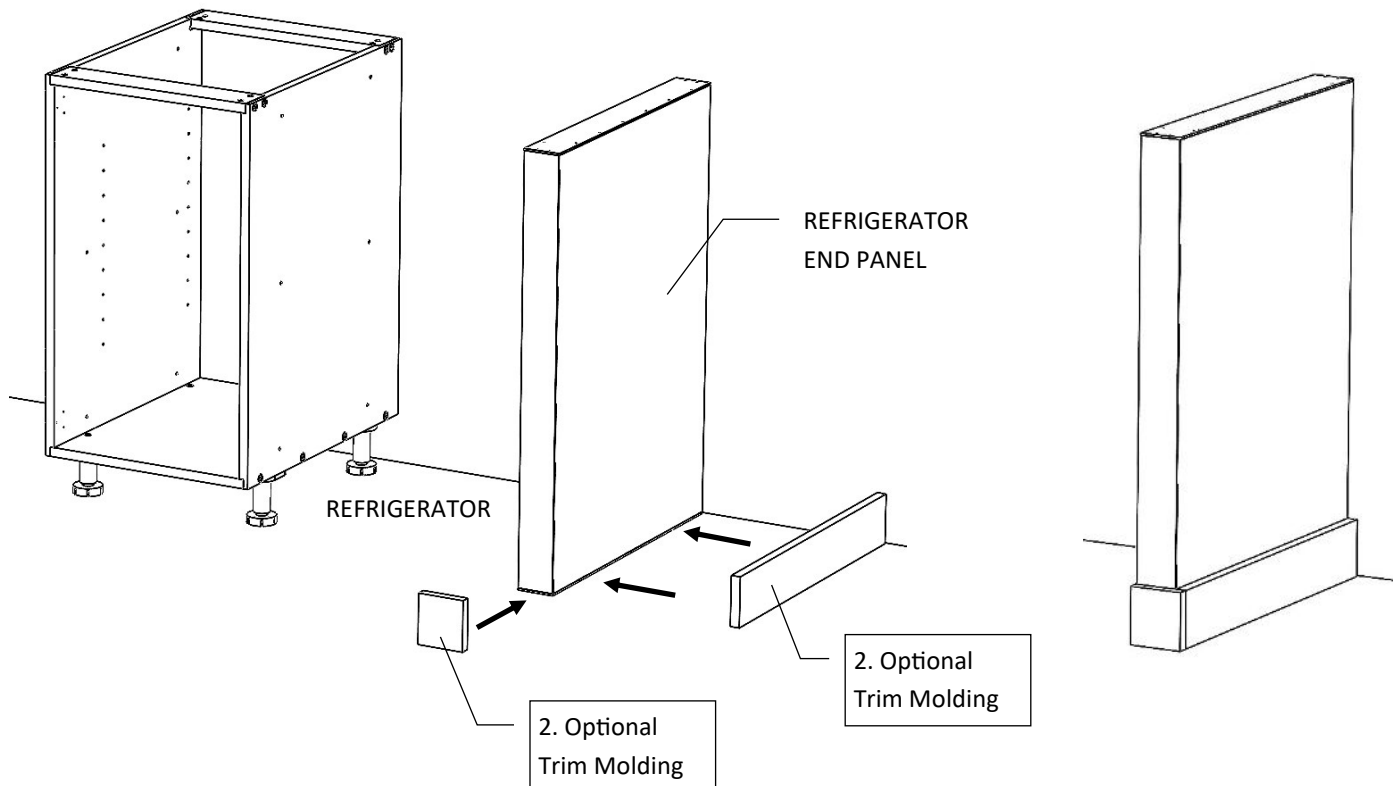
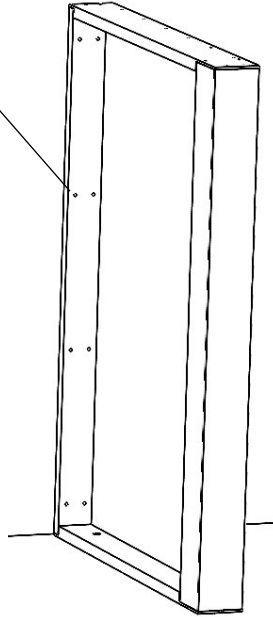


### WARNING

Installers should always wear Protective eyewear and Gloves when cutting and installing the cabinet.

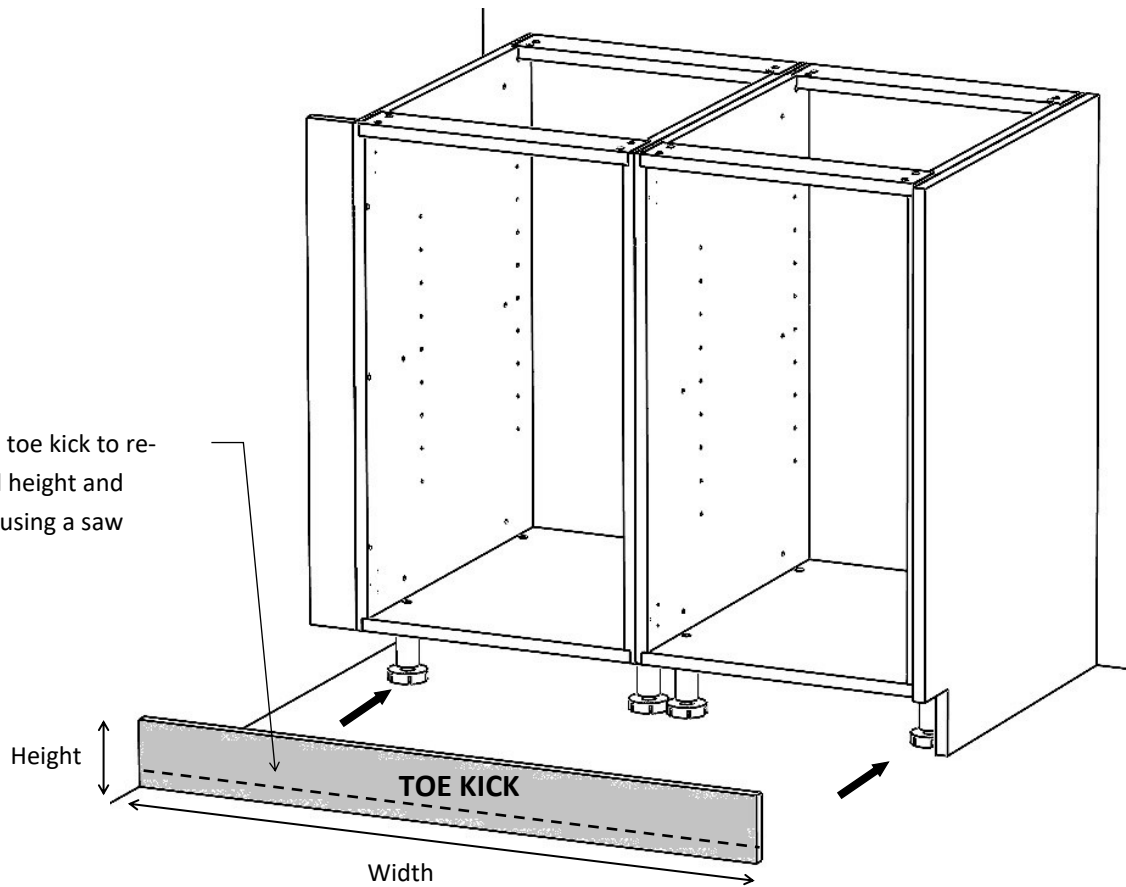
Note: Countertop adhesive such as Silicon will not adhere to the top of the HDPE refrigerator panel, however will adhere to the stainless steel screw heads located around the edge.

1. Attach Refrigerator End Panel to wall.



## TOE KICK

1. Cut toe kick to required height and width using a saw

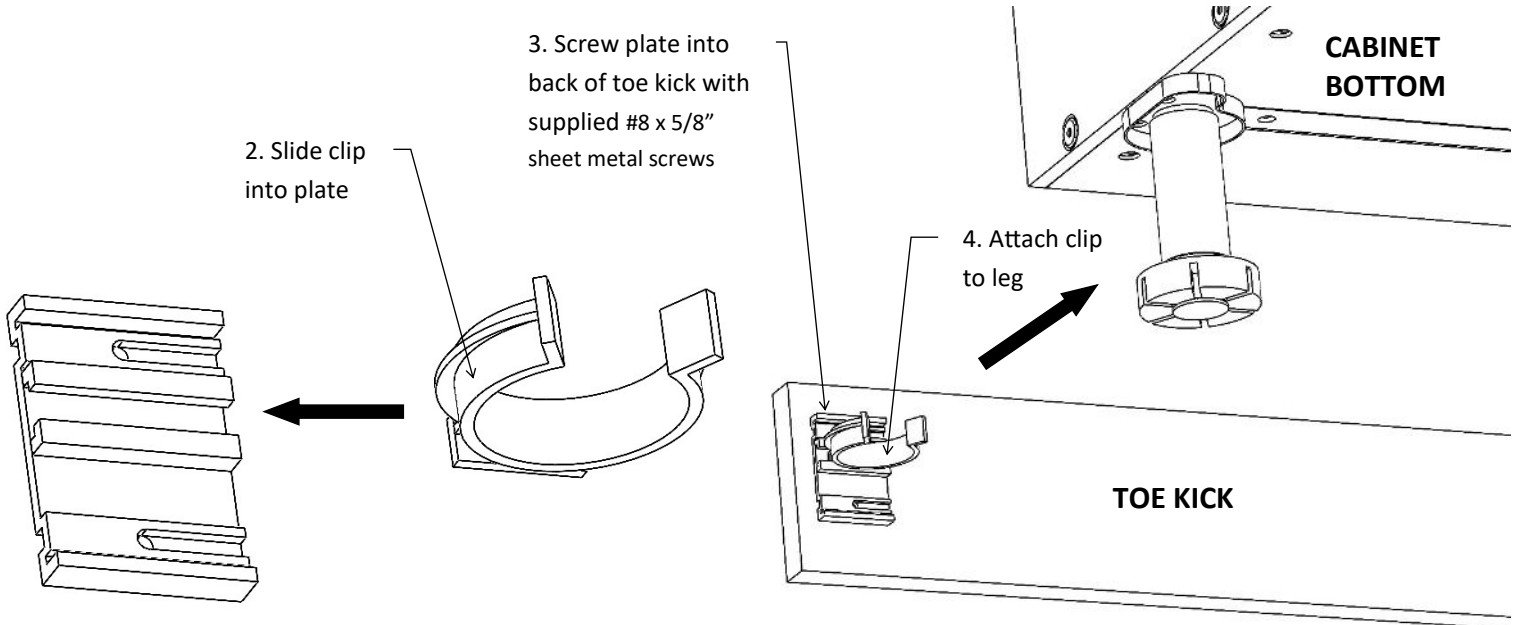


1. Cut toe kick to required height and width using a saw.
2. Slide clip into plate.
3. Screw plate into back of toe kick with supplied #8 x 5/8" sheet metal screws.
4. Attach clip to leg.



**WARNING**

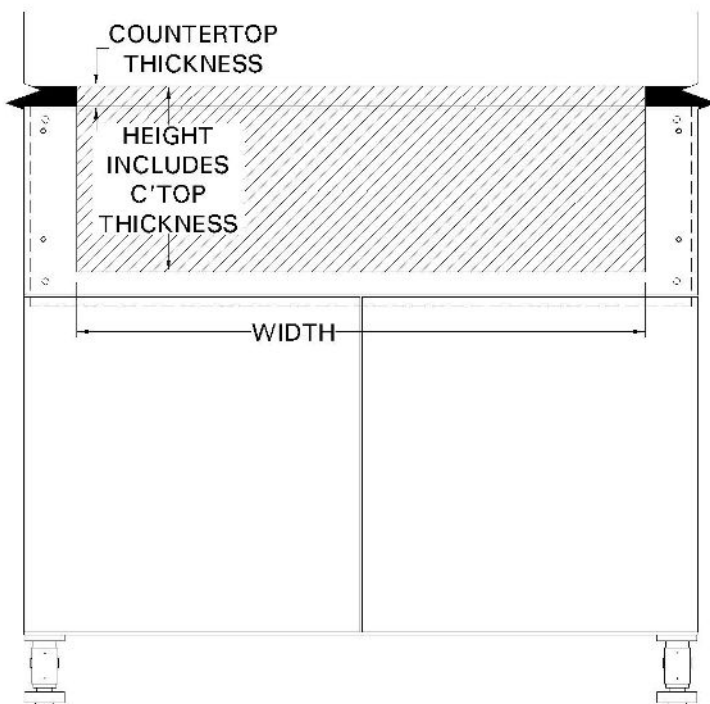
Installers should always wear Protective eye-wear and Gloves when cutting and installing the cabinet.



## GRILL CABINET APRON CUTOUT

**CAUTION:** It is a requirement that you use a grill that comes with a factory-manufactured insulating liner. Most premium grills are available with insulating liners. Most side burners do not require an insulated liner. Check the manufacturers requirements for installation in combustible cabinetry.

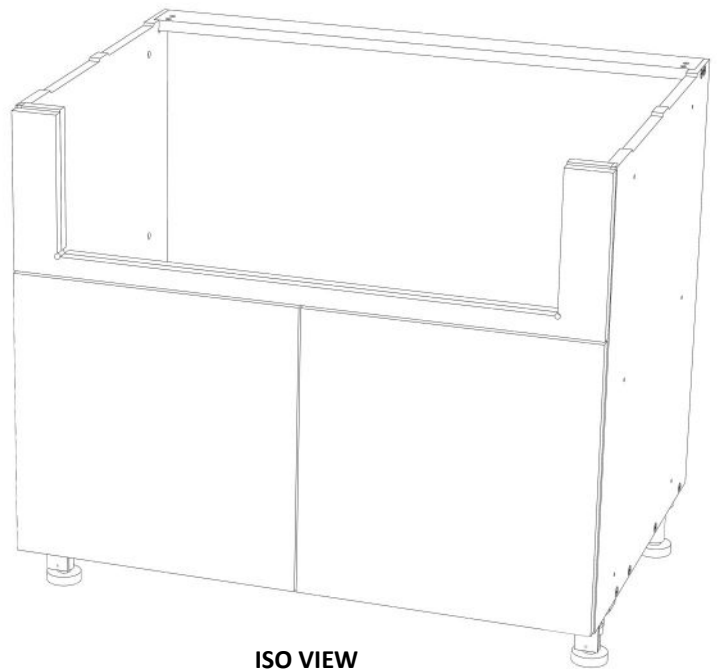
**WARNING** Installers should always wear Protective eyewear and Gloves when cutting and installing the cabinet.



ELEVATION A A



FIGURE 1



\* The Inside and Outside Apron will need to be field cut in order to allow an Insulated Liner/Jacket to be installed. Always refer to the Grill manufacturer for the correct cutout dimensions. Always field verify the dimensions prior to cutting.

1. Disassemble the Inside Apron from the outside apron. Remove the Inside Apron from the front of the cabinet.
2. Reference the Grill Manufacturer's cutout dimensions and field verifying the dimensions with the actual Insulated Liner.
3. The countertop thickness will need to be determined and will need to be included when determining the height of the cutout (See Elevation A).
4. Cut the Inside Apron by using a Jigsaw or Router with a blade or bit suitable for general use with wood or plastic (See Figure 1). *Always protect the Face of the apron from scratches or chips.*
5. After Inside Apron is cut, assemble the Inside Apron to the cabinet and field fit the Grill Liner and test for correct placement. If adjustments need to be made, assemble the outside apron to the inside apron and mark where the new cut needs to be.
6. Cut the outside apron and assemble to the cabinet.

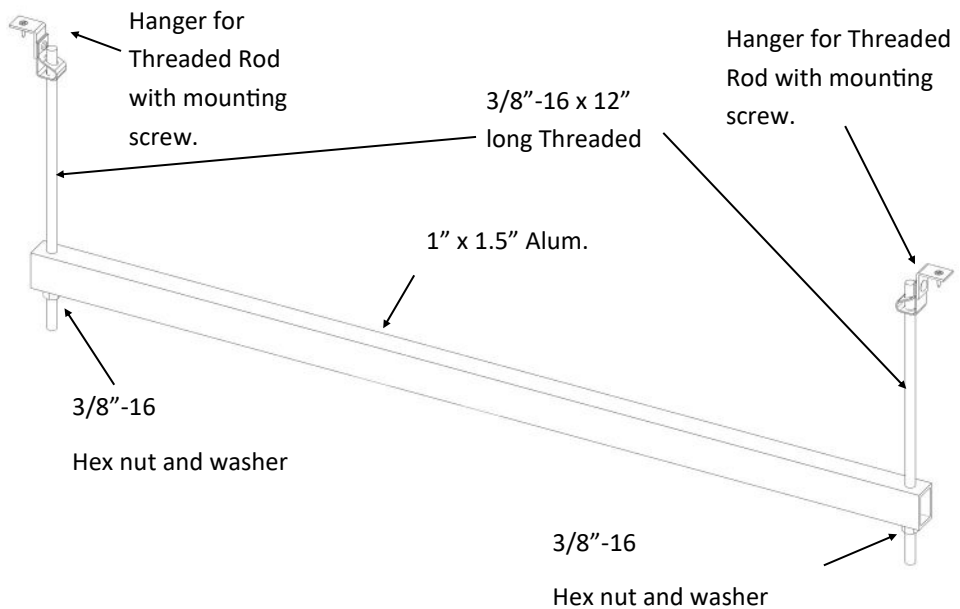
## GRILL CABINET SUPPORT ASSEMBLY

**CAUTION:** It is a requirement that you use a grill that comes with a factory-manufactured insulating liner. Most premium grills are available with insulating liners.

Most side burners do not require an insulated liner. Check the manufacturers requirements for installation in combustible cabinetry.

### WARNING

Installers should always wear Protective eyewear and Gloves when cutting and installing the cabinet.



\* Note on grills that DO NOT hang from counter top: Grill Cabinets are shipped with a support bracket assembly designed to hold the weight of the grill. The support can be adjusted up or down to align with the top of the countertop. The support bracket can also be used to help support the weight of the grill even when using a 'Hang on Countertop' style grill.

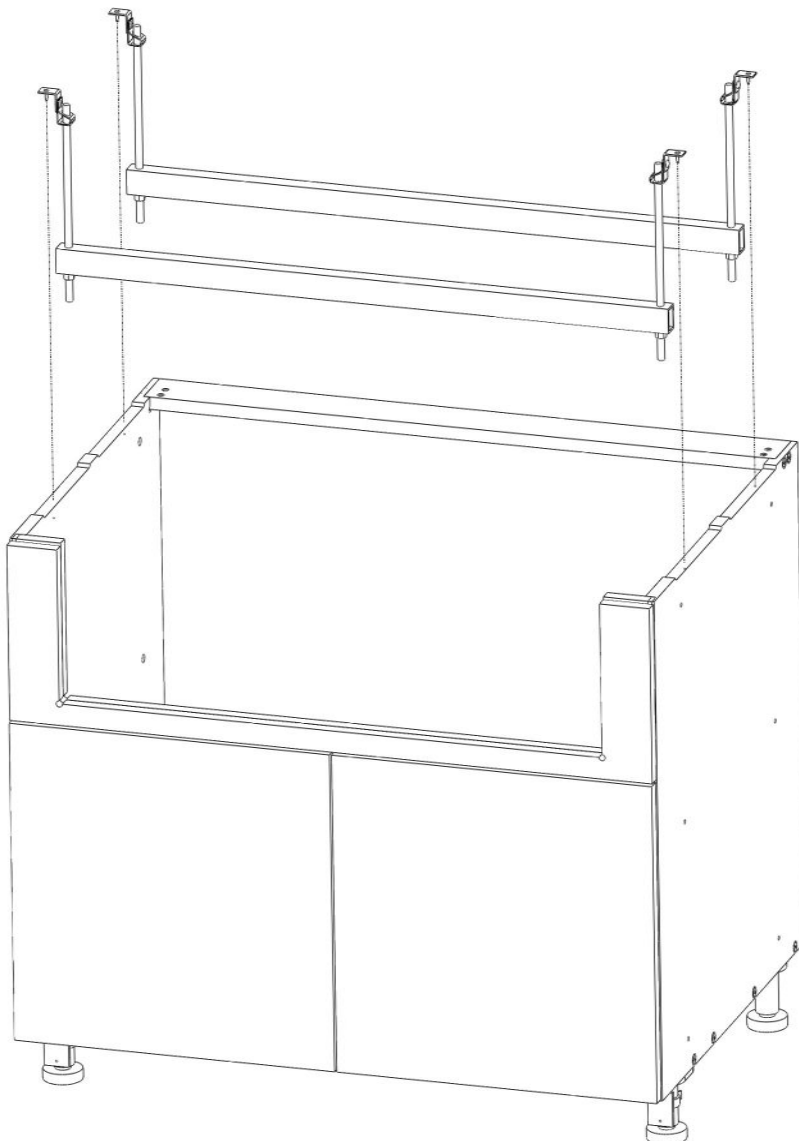
### Hang on Counter Top

Alfresco  
Kitchen Aid  
BBQ Galore  
Lynx  
Cal Flame  
Napoleon  
Capital  
Profire  
DCS  
Solaire  
Dynasty  
Twin Eagles  
Fire Magic  
Vermont castings  
GE  
Vidalia

Jenn Air  
Vintage  
Blaze  
Caliber

### Rest on Support Bracket

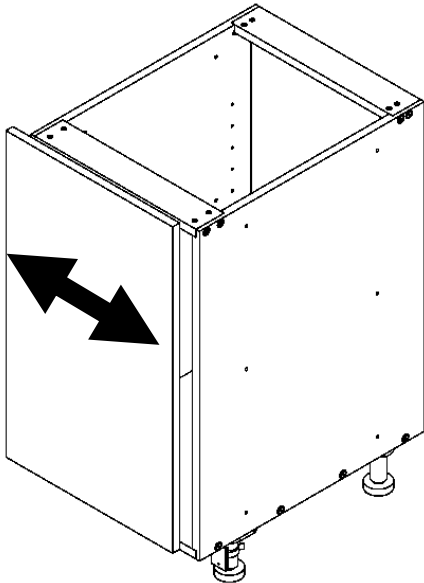
Dacor  
TEC  
Viking  
Wolf  
Hasty-Bake (charcoal)



## DOOR HINGE ADJUSTMENT

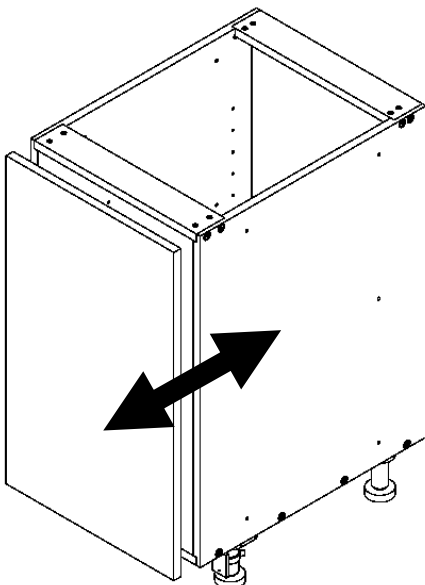
**Note:**

- Cabinets need to be leveled prior to making adjustments to the door hinges.



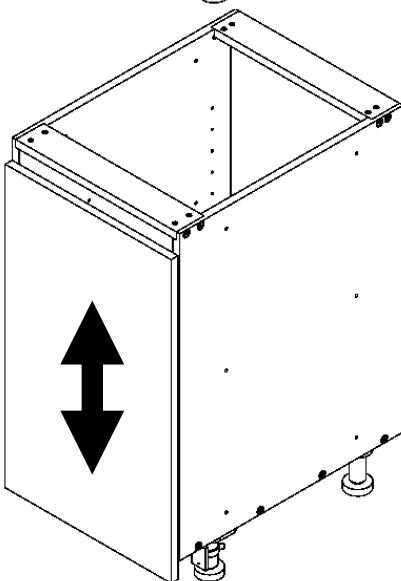
**Side Adjustment**

Rotate front screw to increase or decrease door



**Depth Adjustment**

Rotate rear screw to increase or decrease door



**Height Adjustment**

Rotate both screws on mounting plate to adjust



### HDPE OUTDOOR CABINETRY CARE & MAINTENANCE

- Wash exterior of cabinetry with water and a soft cloth or sponge as needed. If the cabinetry is particularly dirty, wash the exterior with a mild detergent. A soft bristle brush may be used to remove dirt if needed.
- Dry the cabinetry with a soft towel or chamois to prevent water spots.
- To enhance the look of the cabinetry, wipe the cabinetry periodically with a vinyl protectant such as Armor-All using a micro fiber cloth.
- Do not scrape or scrub the cabinetry with anything abrasive as this may permanently damage the surface.
- Do not paint or stain the cabinetry.
- Pool chemicals (like chlorine tablets, liquid chlorine, acid, etc.) will not damage the cabinetry, but the fumes from these chemicals may damage the drawer slides and hinges over time. To limit damage, apply a stainless steel protectant or silicone spray periodically.

### STAINLESS STEEL COMPONENT MAINTENANCE

- Stainless steel components such as door & drawer hardware, grills, appliances, and other parts of your outdoor kitchen separate from the cabinetry do require maintenance.
- Follow the care and maintenance instructions provided with your grill or other outdoor appliance. All grills require surface cleaning and protectant.
- Door and Drawer hardware should be periodically cleaned and protected with a stainless steel cleaner and protectant.
- You can use a blue scotch brite non-scratch pad (gently) and WD-40 to remove surface corrosion and marks from door and drawer hardware.
- Stainless steel components on oceanfront property or near salt-water should be cleaned and protected much more than typical.

### EXTERIOR GRILL HEAD CLEANING

- When cleaning your appliance, always scrub and polish in the direction of the stainless steel grain. Wipe down the exterior of the appliance to remove any splatter or grease.
- Do not use harsh abrasives. Use a stainless steel cleaner to clean the exterior surface for a polished look. To remove baked-on foods, use a fine to medium grit non-metallic abrasive pad with a stainless steel cleaner to avoid specks of grease collecting in the grain causing the appearance of rust.
- Before installing the cover, always allow the surface to dry. DO NOT cover a damp appliance.

### GRANITE COUNTERTOP CARE & MAINTENANCE

- Granite surfaces are subject to small areas of pitting due to air pockets that formed in the stone millions of years ago during the stones natural forming process.
- Granite is also subject to fissures. These are natural occurrences of this product and may appear to be a crack or a defect in a veined slab, but should be viewed by the consumer as a natural characteristic.
- Granite countertops are a very durable work surface and are sealed to help resist staining. However, some household chemicals and acidic liquids can and will break down the sealer. Great care should be taken, and when spills occur they should be wiped up immediately.
- Granite work surfaces are resistant to scratching and heat. However, it is recommended that in high use areas a cutting board or a trivet be used to extend the life of the counters surface.
- Granite countertops should be washed with dish soap and water only. Take special care not to use ammonia products as they may damage your counters surface.
- Granite counters should be cleaned and resealed once a year, or sooner, if exposed to heavy use.

#### HDPE CHEMICAL RESISTANCE PROPERTIES\*

CHEMICAL & CLEANING PRODUCTS	HDPE RECOMMENDED
Alcohol	X
Ammonia Solution	X
Bleach	X
Borax	X
Caustic Soda	X
Citric Acid	X
Clorox®	X
Glass Cleaners	X
Household Cleaners	X
Hydrochloric Acid	X
Hydrogen Peroxide	X
Iodine	X
Mineral Oil	X
Vegetable Oils	X

\* For a complete list, see Reference:  
PDL Handbook Series, Chemical Resistance, Volume I – Thermoplastics, 2nd Edition,  
William Andrew Inc., NY (1994)



## LIMITED LIFETIME WARRANTY

### Limited Lifetime Warranty

Although this has rarely happened, DeSavino & Son's will repair or replace cabinetry which proves to be defective in material or workmanship under normal residential use for the lifetime of the original purchaser. This is our guarantee to you, our valued customer.

Please note, this warranty is not transferable and is expressly limited to the cabinet carcass, base, doors, drawers, shelves, and polymer drawer (Not Drawer Slides).

Separate components not manufactured by DeSavino & Son's such as grills, refrigerators, countertops, casters, stainless steel drawer slides, and accessories may be covered by a separate manufacturer's warranty, but are not covered by this Limited Lifetime Warranty.

Items not specifically listed in this warranty are not covered by this warranty. No other warranty, express or implied, is applicable to this product. DeSavino & Son's shall not be liable for the loss of use of the product, inconvenience, loss or any other damages, direct or consequential, arising out of the use of or inability to use this product.

Our warranty does not apply to cabinets that have been improperly installed, misused or modified. This warranty does not apply to the natural aging of the finish. This warranty applies only to manufacturer defects and does not apply to natural aging or wear and tear.

The above warranty is limited to the repair or replacement of the defective part at the discretion of DeSavino & Son's and does not include service trip(s) expenses necessary for removal labor, shipping, or inspection, replacement or delivery of defective parts. Parts replaced under this warranty are not guaranteed for color match. Defective cabinet parts are subject to a one time replacement. Components and products not manufactured by DeSavino & Son's will carry the warranty of the original manufacturer and are subject to availability from our supplier.

To obtain warranty coverage: Retain your bill of sale and copy of this warranty statement to prove original purchase and warranty terms in effect at the date of your sale. Warranty requests must be accompanied by photographs of the cabinetry as installed to document the defect. Warranty requests will not be processed without proof of purchase and proper documentation. A copy of the sales receipt must be submitted at the time warranty service is requested.

Movable carts including the Kamado Grill Caddy line are limited to a three (3) year warranty period.

Natural Wood Species Doors and other Natural Wood Species components which includes Brazilian Cherry and Teak are NOT covered under our Limited Lifetime Warranty and do not include any separate manufacturers warranty.



**DESAVINO & SONS INC.**

1003 UNDERWOOD ROAD | OLYPHANT, PA 18447

Phone: (888) 889-2314

[openaircabinetry.com](http://openaircabinetry.com)



**FAMILY OWNED  
AMERICAN MADE**

Rev 1-22